



METTE KREBS PETERSEN

Nationality Danish

Education 1988-1993 Danmarks Designskole (The Danish National School of Design)
The Institute of Industrial Textile Design
Copenhagen, Denmark

1992 Ecole Nationale Supérieure De Création Industrielle
Les Ateliers d'Art Textile
Paris, France

1987-1988 Birgit Olsen School of Weaving
Copenhagen, Denmark

Employment 2007-present METTE KREBS PETERSEN DESIGN

2000-2006 Luna Textiles, San Francisco, California
Director of Design

1996-1997 Levi Strauss & Co., San Francisco California
Consultant

1994-1999 Deepa Textiles, San Francisco California
Senior Designer

Profile Mette has more than 16 years of textile design experience. Her uniquely nordic approach to design is characterized by simplicity, refined elegance, appropriate use of materials, and attention to detail. She is dedicated to creating innovative and meaningful products using materials that are respectful of the human spirit and our environment. Mette possesses a rare combination of design sensitivity and technical expertise. Inspired by nature, architecture, and everyday objects and patterns, Mette has created award-winning textiles for a variety of clients. Her inspiration is also based in materiality, using centuries old materials in new ways and in combination with new materials to reflect changing market requirements.



METTE KREBS PETERSEN

Exhibitions

- 2010 Pop-Up Shop
Style Thirteen, New York, USA
- 2006 Sensuality and Survival, New Nordic Designs 2006
Nordic 5 Arts, San Francisco, California, USA
- 2004 TEXTURES
Skaggs Advertising + Design, San Francisco, California, USA
- 2003 Hidden: Talents in our midst
Gensler, San Francisco, California, USA
- 1999 The Sixth International Textile Competition
The Museum of Kyoto, Kyoto Japan
- 1999 SJAL
Textilforum, Herning Denmark
- 1998 SJAL
Rundetårn, Copenhagen Denmark
- 1993 ID'e 19 industriel designere
The Danish Center for Architecture and Building Exports
Copenhagen Denmark

Languages

Danish
English

Contact

Hvidegårdsparken 68
DK-Kongens Lyngby
Denmark
T: +45 2964 5138
e: mette@mettekrebspetersen.com



METTE KREBS PETERSEN

Awards

- 2008 Fuse Collection, Luna Textiles
Best of Neocon Silver Award
- 2007 LUXe Collection, Luna Textiles
Best of Neocon Gold Awards
- 2006 Urban Couture Collection, Luna Textiles
Best of Neocon Silver Award
- 2003 EquinoX Collection, Luna Textiles
Best of Neocon Gold Award
- 2002 Form & Function Collection, Luna Textiles
IIDA Acclaim Award
- 2001 Salon Collection, Luna Textiles
GOOD DESIGN Award
The Chicago Athenaeum Museum of Architecture and Design
- 2000 Paris Collection, Luna Textiles
Best of Neocon, IIDA Contract Design
- 1999 Many Happy Returns, Deepa Textiles
ACCLAIM '99 IIDA Product Design Achievement Awards
GOOD DESIGN Award
The Chicago Athenaeum Museum of Architecture and Design
- 1998 Making Waves, Deepa Textiles
Best of Neocon IIDA Contract Design
ACCLAIM '98 IIDA Product Design Achievement Awards
APEX AWARD IIDA Contract Design
- 1997 Medical College of Georgia, Children's Hospital, Deepa Textiles
ACCIAIM '97 IIDA Product Design Achievement Awards
Privacy Curtain: Winner; Upholstery: Honorable Mention



METTE KREBS PETERSEN

Projects

2010

METTE KREBS PETERSEN DESIGN

Scarf Collection for STYLE THIRTEEN

Four scarf designs to be market and sold via STYLETHIRTEEN.com

2010

Defense Information Systems Agency, Washington DC for Luna Textiles
Custom Imaging Upholstery Fabric

2010

Career Education Corporation, Chicago for Luna Textiles
Custom Imaging Panel Fabric

2010

Valdese Weavers, Upholstery Collection
Seven designs for the American Market

2009

Solstice Collection for Luna Textiles
Eclipse, Halo and Horizon Panel Fabrics

2008

US Institute of Peace, Washington D.C. for Luna Textiles
Custom Imaging Textile concepts for new headquarter

2008

Fuse Collection for Luna Textiles
Splice, Twist and Stitch Panel- and multi-use fabrics

2007

Intel Corporation, Santa Clara California for Luna Textiles
Custom Panel Fabric

2007

Alegent Health, Omaha Nebraska for Luna Textiles
Custom Imaging Upholstery Fabrics

2007

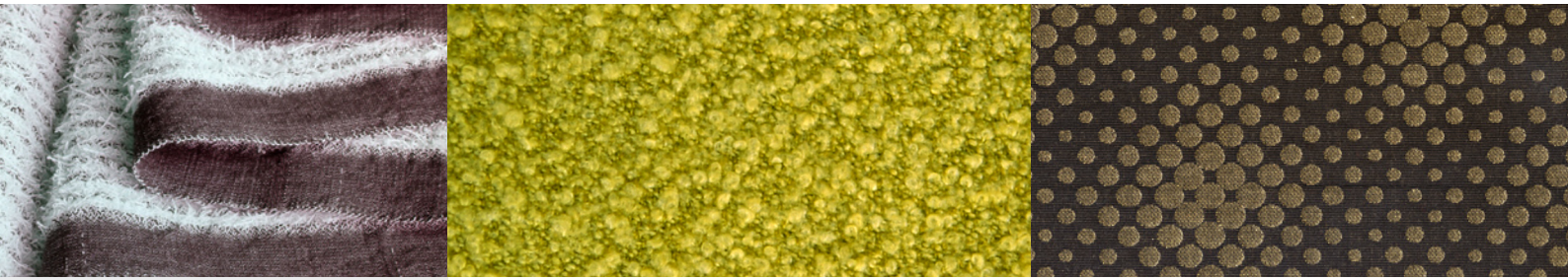
Hearts on Fire, New York for Luna Textiles
Custom Imaging Panel Fabric

2007

Backhausen Interior Textiles GmbH, Collection for the American market
14 Upholstery designs

2007

LUXe Collection for Luna Textiles
Allure, Glimpse, Queue and Salon Upholstery Fabrics



METTE KREBS PETERSEN

Projects

2006

LUNA TEXTILES

Urban Couture, Upholstery Collection
Downtown, Embarcadero, Hudson, Loft

2006

Le Bon Cote' Collection, Upholstery Fabrics
Amuse and Frolic

2005

Metier Collection, Panel Fabrics
Linea and Odeon

2005

Black Angus Restaurant Chain, California
Two custom Upholstery Fabrics for banquette seating

2004

Latitude Collection, Upholstery Collection
Compass, Flare, Hatch and Craft
Design Concepts by Michael Vanderbyl

2004

Muse Collection, Upholstery Collection
Gesture, Whimsy

2004

Genentech, South San Francisco California
Custom Panel- and Upholstery Fabrics

2003

Equinox Collection, Panel Collection
Twilight, Stellar and Vega

2003

Takeda, Chicago Illinois
Custom Panel Fabric

2003

Kinko's, Los Angeles California
Custom Upholstery Fabric for Kinko's stores

2002

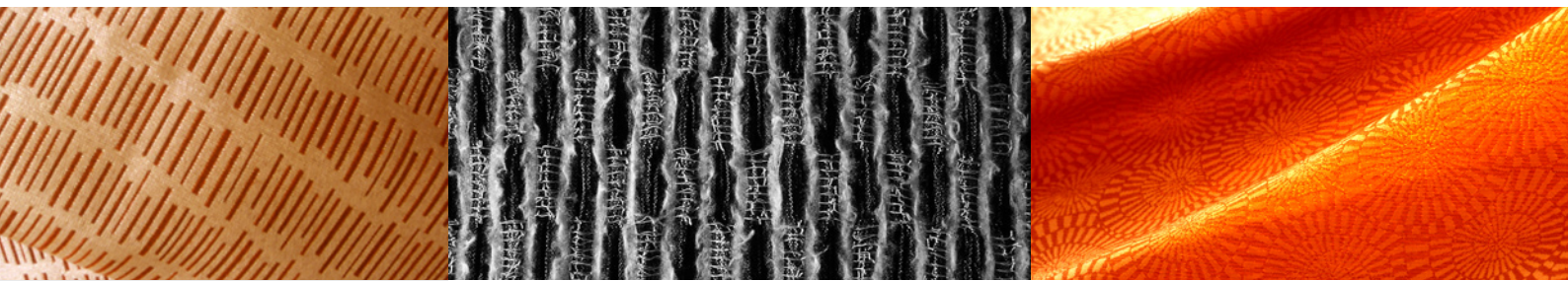
Form & Function Collection, Upholstery and Panel Fabric Collection
Matchsticks, Stars, Stepping Stones

2002

ComEd, Chicago Illinois
Two Custom Panel Fabrics and one Upholstery Fabric

2001

Salon Collection, Upholstery Collection
Bubbly, Metallique, Pearls, Rings, Fluffy



METTE KREBS PETERSEN

Projects

2001

LUNA TEXTILES (continued)

E-Trade Bank, Washington DC
Custom Panel Fabric

2000

Paris Collection, Upholstery Collection
Color selected for 7 solid/textural fabrics

2000

City of Hope, Los Angeles California
Custom Privacy Curtain Fabric

DEEPA TEXTILES

2000

Upholstery Collection
Lafayette, Chestnut

1999

Many Happy Return Collection, Panel Fabrics
Ciao, Au Revoir

1998

Making Waves, Upholstery Fabrics
In the Swim, To and Fro, Undercurrents

1998

Pfizer, Inc. New York, New York
Custom textile program: 2 panel fabrics and 3 upholstery fabrics

1997

Up to Mischief Collection, Upholstery Collection
Dreamweaver, High Wire Act, Drum Roll

1997

The Coca Cola Company, Atlanta Georgia
Custom textile program: 4 panel fabrics and 3 upholstery fabrics

1997

Medical College of Georgia, Atlanta Georgia
Custom design of privacy curtain, bedspread and upholstery fabric

1996

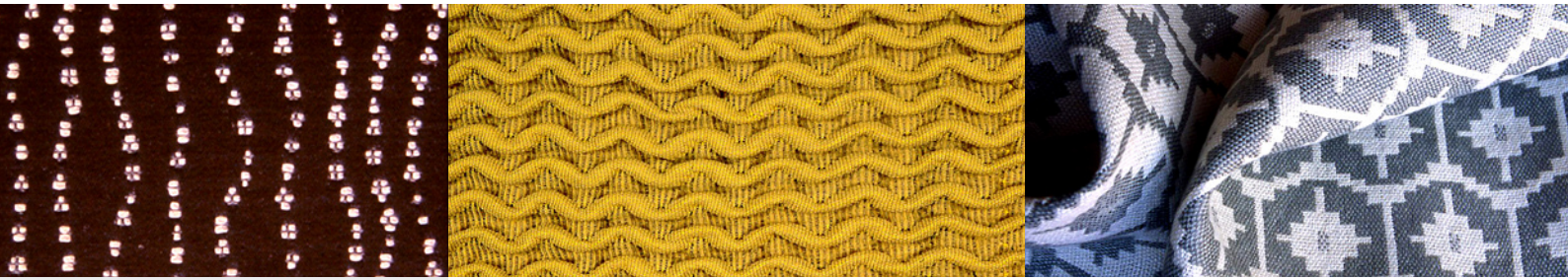
Sparks will Fly, Upholstery and Panel Fabric Collection
Dance of Light Upholstery, Mark My Words Panel Fabric

1996

NIKE, Portland Oregon
Custom Upholstery Fabric

1996

Deepa Textiles, San Francisco California
Deepa Imaging Fabric for office, display and marketing



METTE KREBS PETERSEN

Projects

1995

DEEPA TEXTILES (continued)

Majestic Silence Collection, Upholstery Collection
Big Bang, Knockmedown, Nub Nub

1995

Hewlett Packard Company, Santa Rosa California
Custom panel fabric

1995

Genentec, Inc., South San Francisco California
Custom panel- and tackborad fabrics

1995

Lucas Arts, San Rafael California
Custom upholstery and panel fabrics

1995

Walt Disney Company, Los Angeles California
Custom upholstery and panel fabrics

1994

University of Rochester Medical Center, Rochester New York
Custom privacy curtain